



Cryopak

The Perfect Degree of Protection

- Temperature range of -100°C to 40°C (-148°F to 104°F)
- 1 meter Teflon cable connects stainless steel temperature probe to the data logger
- Large LCD Display with multifunctional viewing
- Large memory capacity ; 8048 readings
- Available as a single trip or multi-use unit

iMiniPlus DRY ICE



CERTIFICATIONS



bsi.

21 CFR
Part 11

EN12830
Compliant

RoHS
Compliant

ISO
9001:2015

Product Specifications *(continued on back)*

| Logger | |
|----------------------|---|
| Product Code | MP-OE-N-8-L (multi-use), MP-ST-N-8-L (single trip) |
| Memory Options | 8K readings |
| Program Interval | 5 seconds to 18 hours |
| Time Accuracy | +/- 1 minute per month |
| Sensors | External |
| Temperature Range | -100°C to 40°C (-148° to 104°F) |
| Temperature Accuracy | From -100°C to -80°C +/-1.0°C (-148°F to -112°F +/- 1.8°F) From -79°C to -10°C +/- 0.7°C (-111°F to 14°F +/- 1.3°F) From -9°C to 40°C +/- 0.6°C (15°F to 104°F +/- 1.0°F) |
| Resolution | 0.1°C (0.1°F) |
| Sensor Response Time | T90 of 5 minutes |
| LCD Operation Range | -20°C to 70°C (-4°F to 158°F) |
| Alarm Threshold | 2 |
| Alarm Configuration | HIGH & LOW |
| Bookmark | Yes |
| Preprogram Option | User programmable; preprogramming available |
| Start Option | Push button and/or timer |
| Auto Restart | No |
| Start Delay | Yes |
| Stop Option | Yes (button can be disabled) |
| Size | 83x57x17mm (excluding lug & external sensor) |
| Weight | 70 grams (including battery) |



Cryopak

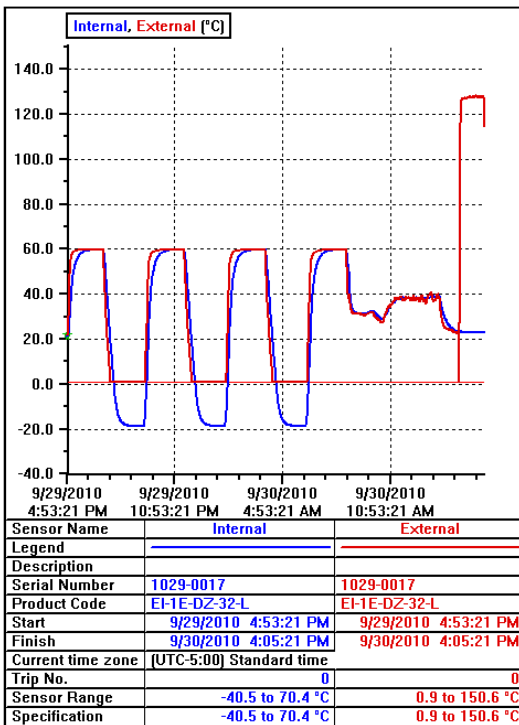
The Perfect Degree of Protection

iMiniPlus DRY ICE

Product Specifications *(continued from front)*

| Logger | |
|----------------------|--|
| Case Material | Polycarbonate/ABS |
| Battery | User replaceable lithium battery; 3v coin cell |
| IP Rating | IP 64 (with DB9 cap on) |
| Warranty | 2 year excluding battery (multi-use) 1 trip excluding battery (single trip) |
| Calibration | NIST traceable upon request |
| Accuracy Certificate | Yes |
| Other Certification | ISO9001:2008, CE, RoHS |
| Shelf Life | 1-2 years (depending on usage) |
| Interface | USB to Serial |
| Software | ConsolePlus |
| Default File Format | .LCF (data can be exported as SYLK, CSV, TXT, LCF with ConsolePlus) |
| Security | Password protected (programmable using Console Pro Software) |

Graphs, readings and summary



| Index | Elapsed Time | Date | Time | Freezer (°C) |
|----------------------|--------------|-----------|------------|--------------------------------|
| Serial Number | | | | 1301-0011 |
| H/W version | | | | 2.2x |
| Trip No. | | | | 1 |
| Description | | | | |
| Battery | | | | 92.5 % |
| Original time zone | | | | (UTC+8:00) Standard time |
| Current time zone | | | | (UTC-5:00) Standard time |
| Start | | 6/17/2013 | 5:00:00 AM | |
| Finish | | 6/17/2013 | 9:35:00 PM | |
| Sampling | | | | 5 Minutes |
| Readings | | | | 200 (995 Minutes) |
| Active | | | | -40.5 to 70.4 °C |
| Specification | | | | -35.0 to -15.0 °C |
| Average | | | | -20.5 |
| Highest | | | | 24.7 |
| Lowest | | | | -24.9 |
| PHI Aerobic | | | | 0.74 |
| PHI Anaerobic | | | | 0.52 |
| MKT | | | | -1.01 |
| Total No. of Pulses | | | | -342.94 |
| Growing Degree Day | | | | 0.0 |
| Out Of Specification | | | | 80 Minutes |
| | | | | 10 Minutes from -14.9 to -10.0 |
| | | | | 5 Minutes from -9.9 to -5.0 |
| | | | | 5 Minutes from -4.9 to 0.0 |
| | | | | 450 Seconds from 0.1 to 5.0 |
| | | | | 5 Minutes from 5.1 to 10.0 |
| | | | | 5 Minutes from 10.1 to 15.0 |
| | | | | 5 Minutes from 15.1 to 20.0 |
| | | | | 2250 Seconds from 20.1 to 25.0 |
| 1 | 00:00:00 | 6/17/2013 | 5:00:00 AM | 1.8 |
| 2 | 00:05:00 | 6/17/2013 | 5:05:00 AM | -1.5 |
| 3 | 00:10:00 | 6/17/2013 | 5:10:00 AM | -7.7 |
| 4 | 00:15:00 | 6/17/2013 | 5:15:00 AM | -11.6 |
| 5 | 00:20:00 | 6/17/2013 | 5:20:00 AM | -14.7 |
| 6 | 00:25:00 | 6/17/2013 | 5:25:00 AM | -16.9 |
| 7 | 00:30:00 | 6/17/2013 | 5:30:00 AM | -18.5 |

Views

| Views | Links | Analysis |
|----------------------|-------|----------|
| Readings | | |
| List of readings | | |
| Readings and summary | | |
| 2D Graph | | |
| Line | | |
| Step | | |
| Summary | | |
| Overview | | |
| Statistics | | |
| Analysis | | |
| Out Of Specification | | |
| Marked Readings | | |

Links

| Description | Details |
|------------------------|------------------|
| 1301-0011 | 6/17/2013 6:0... |
| Freezer | -40.5 to 70.4 °C |
| 0111-5555 | 8/24/2012 4:4... |
| Air Temp | -40.5 to 70.4 °C |
| Humidity | 0 to 100 %RH |
| QLD CHILLER (0127-3... | 7/24/2012 6:0... |
| Internal | -40.5 to 70.4 °C |
| 0133-008 | 12/17/2012 1... |
| Internal | 0.9 to 125 °C |
| External | 25 to 150.6 °C |



United States
Edison, NJ
1-888-827-3393

Canada
Anjou, QC
1-888-423-7251 (QC)
1-800-667-2532 (BC)

France
Maromme, France
+ 33 (0) 2 32 82 59 65

www.cryopak.com